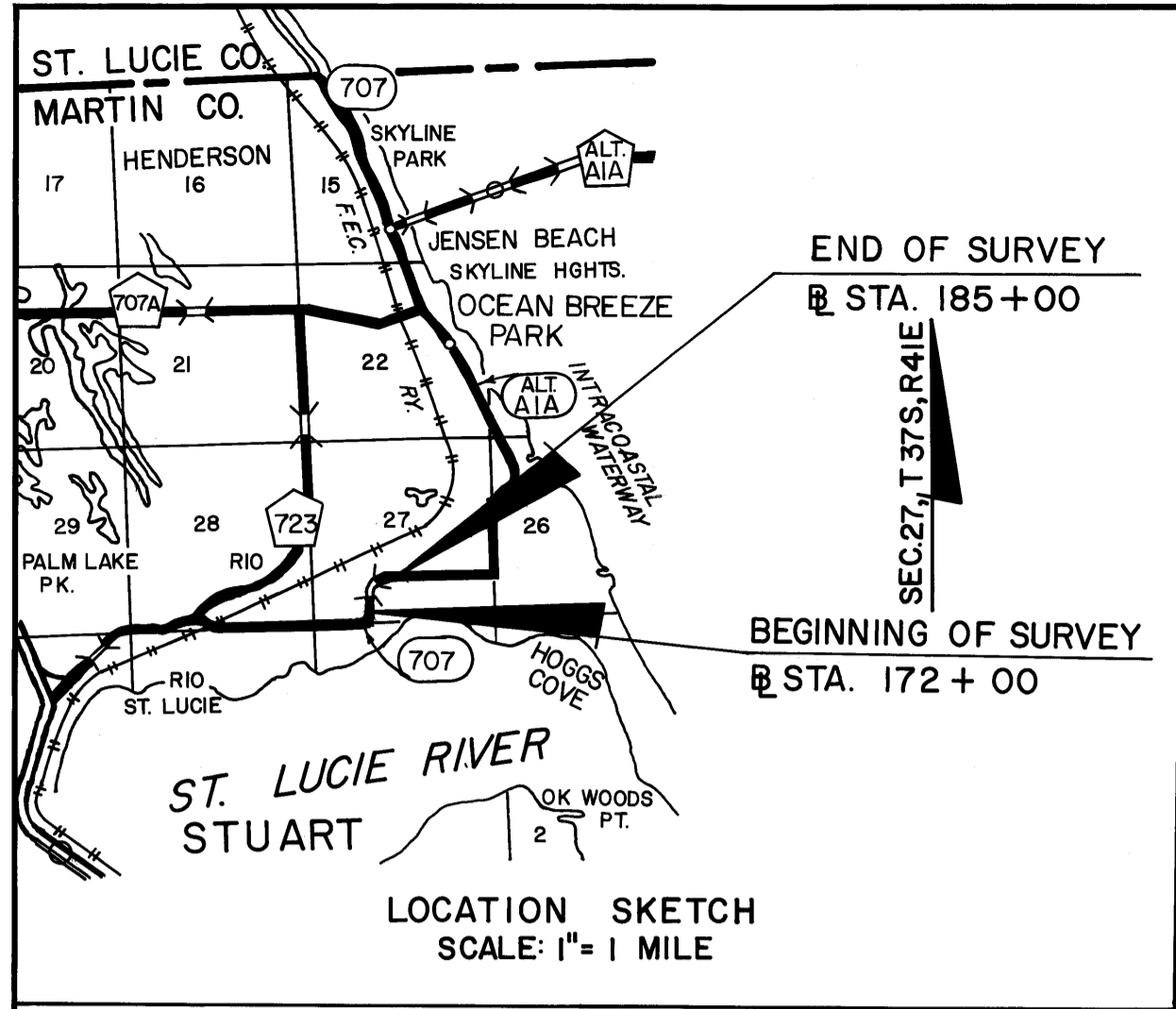


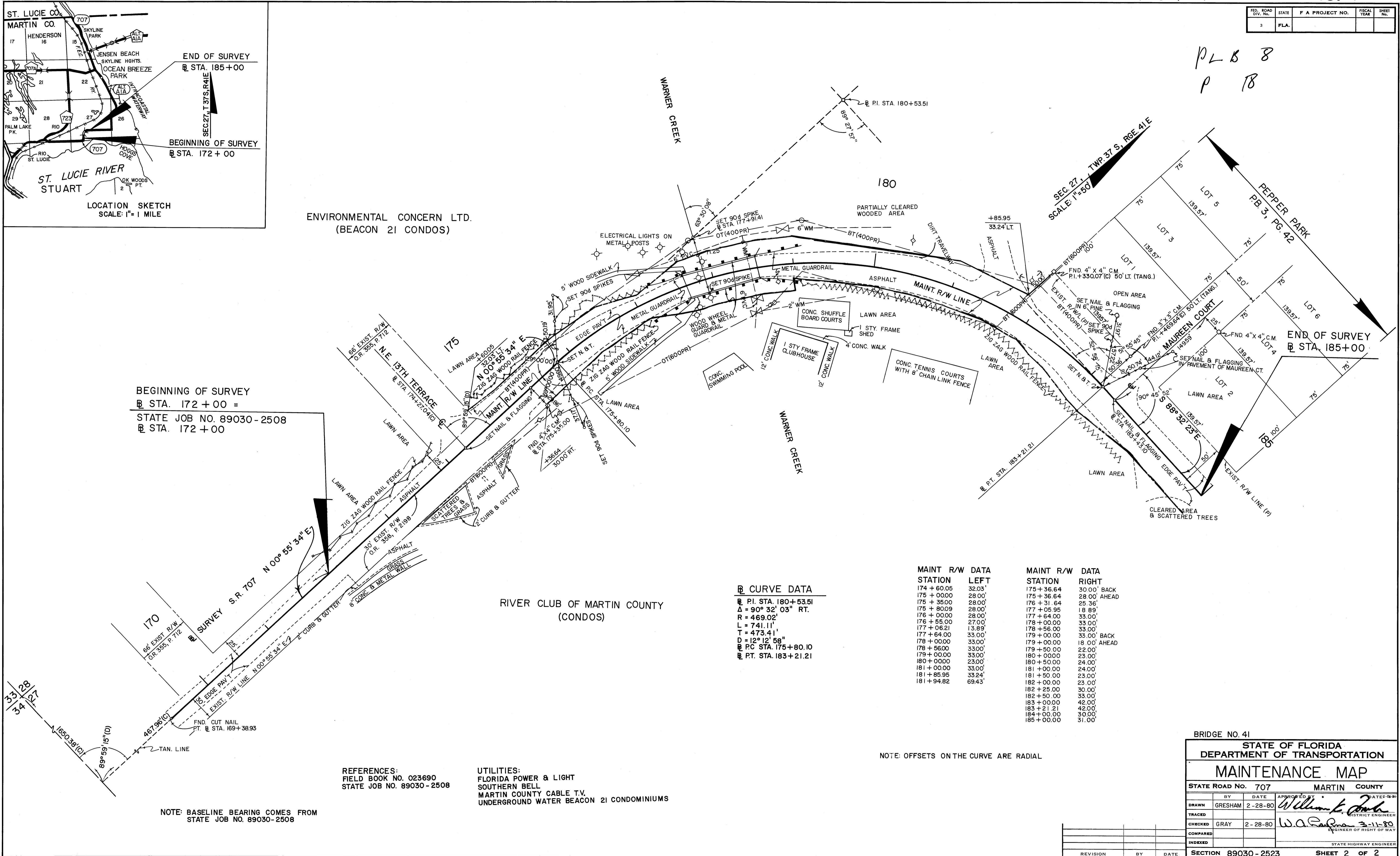
FED. ROAD DIV. NO.	STATE	F.A. PROJECT NO.	FISCAL YEAR	SHEET NO.
3	FLA.			

PL 5 8
P 18



ENVIRONMENTAL CONCERN LTD.
(BEACON 21 CONDOS)

BEGINNING OF SURVEY
@ STA. 172 + 00 =
STATE JOB NO. 89030-2508
@ STA. 172 + 00



② CURVE DATA

PI. STA. 180+53.51
 $\Delta = 90^\circ 32' 03''$ RT.
 $R = 469.02'$
 $L = 741.11'$
 $T = 473.41'$
 $D = 12^\circ 12' 58''$
 PC STA. 175+80.10
 PT. STA. 183+21.21

MAINT R/W DATA

STATION	LEFT
174+60.05	32.03'
175+00.00	28.00'
175+35.00	28.00'
175+80.09	28.00'
176+00.00	28.00'
176+55.00	27.00'
177+06.21	13.89'
177+64.00	33.00'
178+00.00	33.00'
178+56.00	33.00'
179+00.00	33.00'
180+00.00	23.00'
181+00.00	33.00'
181+85.95	33.24'
181+94.82	69.43'

MAINT R/W DATA

STATION	RIGHT
175+36.64	30.00' BACK
175+36.64	28.00' AHEAD
176+31.64	25.36'
177+05.95	18.89'
177+64.00	33.00'
178+00.00	33.00'
178+56.00	33.00' BACK
179+00.00	33.00' AHEAD
179+50.00	22.00'
180+00.00	23.00'
180+50.00	24.00'
181+00.00	24.00'
181+50.00	23.00'
182+00.00	23.00'
182+25.00	30.00'
182+50.00	33.00'
183+00.00	42.00'
183+21.21	42.00'
184+00.00	30.00'
185+00.00	31.00'

NOTE: OFFSETS ON THE CURVE ARE RADIAL

REFERENCES:
FIELD BOOK NO. 023690
STATE JOB NO. 89030-2508

UTILITIES:
FLORIDA POWER & LIGHT
SOUTHERN BELL
MARTIN COUNTY CABLE T.V.
UNDERGROUND WATER BEACON 21 CONDOMINIUMS

NOTE: BASELINE BEARING COMES FROM
STATE JOB NO. 89030-2508

BRIDGE NO. 41

STATE OF FLORIDA
DEPARTMENT OF TRANSPORTATION

MAINTENANCE MAP

STATE ROAD NO.	707	MARTIN COUNTY
DRAWN BY	GRESHAM	DATE 2-28-80
APPROVED BY	<i>William F. Jones</i> DISTRICT ENGINEER	
CHECKED BY	GRAY	DATE 3-11-80
ENGINEER OF RIGHT OF WAY	<i>W.A. ...</i>	
SECTION	89030-2523	SHEET 2 OF 2